

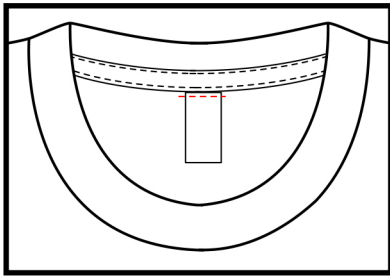
- Minimum units per order 72, minimum units per style/color 36, sizes in multiples of 12
- Advise how you want the label sewn. (i.e. one side, two sides or four sides.)
- Customer must advise if they want the care/content/size label removed or not.
- Customer needs to supply Royal Apparel with their own labels.
- If we do leave the care label, customer must advise placement of the label. (i.e. Inside the neck or inside side seam)
- Provide the requested information at [royalapparel.net/relabel](http://royalapparel.net/relabel) and our production team will contact you.

### LABEL EXAMPLES

---

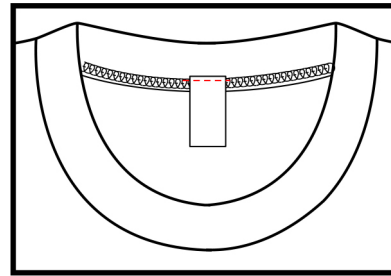
#### CUSTOM LABELING UNDER NECK TAPE

This version only pertains to styles which have shoulder to shoulder neck tape.



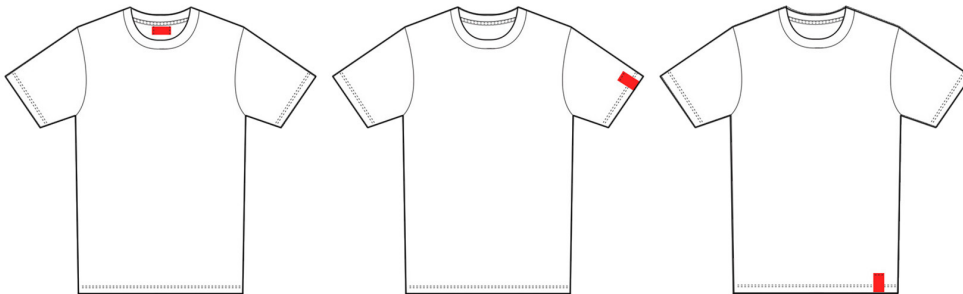
#### CUSTOM LABELING ON BINDING STYLES

This version pertains to all styles with top stitch neck binding



#### OTHER LABELING

We also offer other labeling options. If you want a label on the sleeve hem, bottom hem or other location on our garment styles we will need a sample to follow for construction and placement.



### ADDITIONAL INFORMATION ON THE CUSTOM LABEL PROGRAMS

1. Labels must be provided with minimum of 3/8" bleed so information is not cut off.
2. Labels must be pre-cut/pre-folded by customer.
3. Prices may vary depending on label size, construction and placement.
4. Custom label orders are not eligible for free freight and must be shipped upon completion.
5. Delivery dates will be quoted once all the project details are received by Royal Apparel.
6. All label orders must be paid in advance.